



EXCLUSIVE

SPIDER LIFTS
AT A HIGHER LEVEL
FOR 40 YEARS

FALCON 370 / 420 *Wheel*



FALCON
LIFTS



The ultimate compact platform

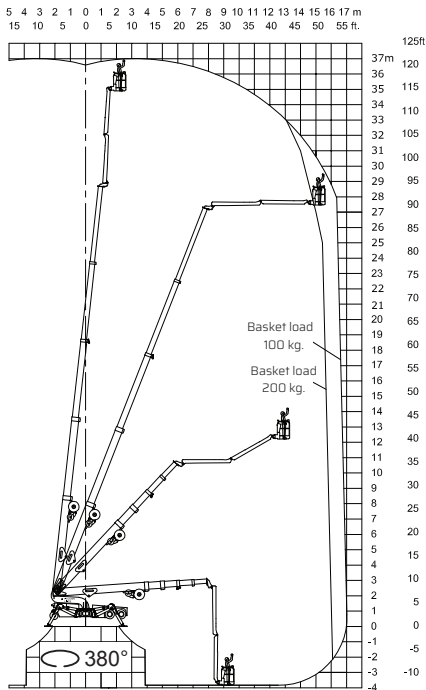
The Falcon Spider Atrium Lift FALCON 370/420 Wheel is an original Falcon Spider Lift with market leading features. These Falcon Spider Atrium Lifts have a 37-42 m working height, and is designed with wheels for smooth propelling and reduced ground pressure. The Falcon Spider Atrium Lift was originally invented in the 1970's, and developed ever since. The Falcon Spider Atrium Lift FALCON 370/420 Wheel is very applicable in matters of:

- Facility management
- Atrium access
- Narrow access
- Best quality & safety
- Double jib system
- Easy transport & propelling
- Low weight & ground pressure
- Flexible outrigger setting
- Limited setup space
- Power - Bi-energy Hybrid

The Falcon Spider Atrium Lift is capable of passing through a door opening a mere 0,9 m wide and 1,98 m high.

The special designed boogie axle with twin wheels reduces ground pressure and allows driving on sensitive floorings.

FALCON 370 Wheel

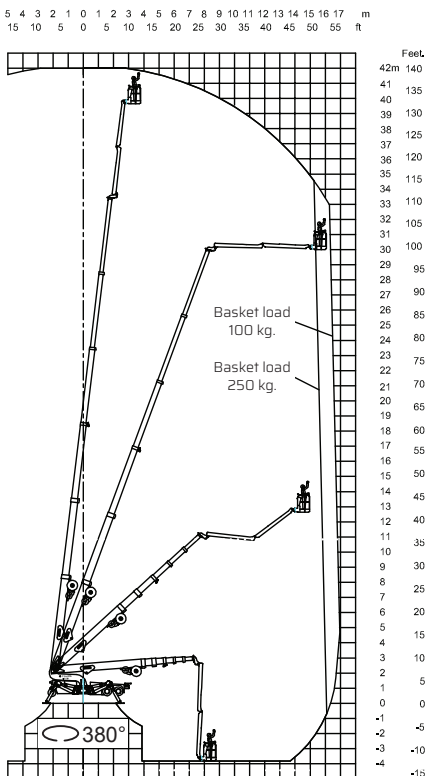


▲ Working height and reach



Model: **FALCON 370 Wheel** **FALCON 420 Wheel**

FALCON 420 Wheel



▲ Working height and reach

Working height:	37 m	42 m
Maximum reach:	16-17 m	16-17 m
Double jib (2 x 3 m):	6 m	6 m
Double jib rotation:	200°	200°
Basket load:	200 kg	200 kg
Aluminium basket:	(0,8 x 1,4 m)	(0,8 x 1,4 m)
Basket rotation (option):	+/- 90°	+/- 90°
Turret rotation:	380°	380°
Dimensions (transport position)		
Total height:	1,98 m	1,98 m
Total length:	8,10 m	8,25 m
Total width:	0,90 m* - 1,80 m*	0,90 m* - 1,80 m*
Gradability (standard):	13° / 23%	13° / 23%
Weight approx.:	6.900 kg*	7.500 kg*

*Depending on optional equipment



FALCON LIFTS A/S

Tolderlundsvej 106
DK-5000 Odense C
Tel: +45 66 13 11 00

falcon@falconlifts.com
falconlifts.com

STANDARD EQUIPMENT:

- Automatic stability & outreach control
- Computer controlled (can-bus)
- Proportional control of all functions
- Self-propelled
- Battery powered with charger (400 Ah)
- Double jib
- 380° turret rotation, with integrated stop
- Individual setting of each outrigger
- Electronic checking of the power system (PLC)
- Manual pump system for emergency lowering
- Ability to self-load onto trucks or trailers
- Non marking solid tyres
- Adjustable axle width
- Minimum width only 0.9 m
- Space for tools etc. in basket
- Storage room with lock in chassis
- Boogie axle (reduces ground pressure)
- 4-wheel drive (2 axles)
- Wireless remote control of all functions
- Gradability 13° / 23%
- Falcon Service Tool (remote access via laptop)

OPTIONS:

- +/- 90° basket rotation
- 220V AC power supply in the basket
- Air / water supply in the basket
- Sensor system on basket
- Kubota diesel engine, 19 kW
- Anemometer wind warning system
- 400V AC Phase 3, 7,5 kW/16A
- 4-8 pcs extra batteries
- Autosetting/levelling
- Chassis control from basket
- Special outrigger footplates
- Basket in various sizes
- Slope alarm
- Twin wheels on rear axle
- Special colour
- Dust Cover for Storage
- GSM module for remote access and monitoring
- Anti entrapment device