



AIRLESSCO™

MANUFACTURED BY GRACO®

**BUILT TO PERFORM.
BUILT TO LAST.**

PROFESSIONAL GRADE
SPRAY EQUIPMENT



MADE IN THE USA WITH
GLOBAL COMPONENTS



Maximize performance. Minimize costs.

Why choose an Airlessco sprayer over the competition?

UNMATCHED PERFORMANCE

For operational life and low-cost maintenance, Airlessco paint sprayers outshine the competition. No other brand pumps more gallons of paint with first-rate results, from one regular service interval to the next.

UNRIVALED DURABILITY

DURABLE MOTOR: Each Airlessco MP/LP/SL/TS Sprayer is built with an ultra-durable DC motor. They turn slower, driving the pump with a solid gear system. The motors are larger with more torque than competitors, making them longer lasting and more reliable. That's why we're not afraid to back them up with a lifetime warranty.

LONG LIFE PISTON: Airlessco pumps utilize hardened stainless steel and chrome to deliver the longest lasting pumps available.

ADJUSTABLE PACKINGS: Airlessco's exclusive Pro-Duty Pump design is the only one that lets you tighten upper and lower packing tension from outside the pump, extending the life of the packings.

SERVICE

Professionals who use paint sprayers daily need customer service and technical support that keeps the pace. Airlessco's full-service technical department is standing by to give you in-the-moment advice and help. Parts and accessories are fully stocked and available with same or next-day shipping to keep you moving forward with every job.

WARRANTY

Some manufacturers boast about offering longer warranties, but beware the double-talk and read the fine print! You'll find they actually reduce the amount of time they cover major components, like piston rods and packings, that might not hold up to steady contractor use.

NEW!

Quick Repair Pump™

- Fast on-the-job pump repair
- No special tools required
- Eliminates costly downtime

Pro-Duty Pump™

- Chrome-plated rods and adjustable packings for extended pump life
- Lifetime warranty for pump cylinder

Heavy-Duty Drive System

- 2-stage gear drive delivers both reliability and precision without the use of a belt
- Lifetime warranty



A SPRAYER FOR EVERY JOB:

RESIDENTIAL – SP Series (pg 3-4)

RESIDENTIAL/LIGHT COMMERCIAL – MP and LP Series (pg 5-6)

RESIDENTIAL/MEDIUM COMMERCIAL & HEAVY COMMERCIAL – SL and GS Series (pg 7-8)

INDUSTRIAL – HSS and TS Series (pg 9-10)



SP SERIES



ELECTRIC AIRLESS PAINT SPRAYERS FOR RESIDENTIAL USE

These entry-level sprayers spray a variety of interior and exterior oil- and water-based coatings. They're ideal for the contractor who sprays occasionally or has one big job, or for a homeowner painting the whole house. Compact, lightweight piston pumps make these sprayers easy to move around the job site, and the Quick Repair Pump system on the SP340 and SP380 lets you repair the pump on the spot and keep moving.



SP200



- APPLICATIONS:** Small to medium residential projects
- SPRAY:** Water and Oil-Based Coatings, 100% Acrylics, Stains and Varnishes
- USAGE:** Up to 125 gallons per year
- FEATURES:**
- Pump directly from 1 or 5-gallon paint container
 - Stand mount is compact, lightweight and easy to transport
 - Convenient, built-in carrying handle makes moving sprayer and paint easier
 - Hardened stainless steel piston pump
 - Pressure control with user-friendly symbols for simple selection of operating modes
 - PowerPlug™ cord-end lights up to indicate good power source
- INCLUDES:** 1/4 in x 25 ft hose, 4-finger trigger ProLight 500 gun and 515 Rev-Tip



SP340



- APPLICATIONS:** Small to medium residential projects
- SPRAY:** Water and Oil-Based Coatings, 100% Acrylics, Stains and Varnishes
- USAGE:** Up to 300 gallons per year
- FEATURES:**
- Pump directly from 1 or 5-gallon paint container
 - Power-piston pump with QRP and long life
 - InstaClean™ pump filter helps remove debris, reducing tip plugs and providing a better finish
 - Convenient cart to move sprayer and paint together
 - Pressure control with user-friendly symbols for simple selection of operating modes
 - PowerPlug™ cord-end lights up to indicate good power source
- INCLUDES:** 1/4 in x 50 ft hose, 4-finger trigger ProLight 500 gun and 515 Rev-Tip



SP380



- APPLICATIONS:** Small to medium residential projects
- SPRAY:** Water and Oil-Based Coatings, 100% Acrylics, Stains and Varnishes
- USAGE:** Up to 500 gallons per year
- FEATURES:**
- Pump directly from 1 or 5-gallon paint container
 - Power-piston pump with QRP and long life
 - InstaClean™ pump filter helps remove debris, reducing tip plugs and providing a better finish
 - Lightweight stand is easy to carry to any job site
 - Pressure control with user-friendly symbols for simple selection of operating modes
 - PowerPlug™ cord-end lights up to indicate good power source
- INCLUDES:** 1/4 in x 50 ft hose, 4-finger trigger ProLight 500 gun and 515 Rev-Tip

SPECIFICATIONS

	SP200	SP340	SP380
Model Type	Stand	Hiboy	Stand
Part Number	24F557	17H205	17H199
Max Tip Size	0.015 in	0.017 in	0.019 in
Max Output gpm / lpm	0.27 / 1.0	0.34 / 1.3	0.38 / 1.4
Max Working Pressure psi / bar	3,000 / 207	3,000 / 207	3,000 / 207
Max Hose Length ft / m	75 / 23	150 / 45	150 / 45
Unit Weight lbs / kg	21 / 10	35 / 16	28 / 13
Motor	1/2 HP Universal	3/4 HP DC	7/8 HP DC

QUICK REPAIR PUMP SYSTEM

Skip the downtime and extra costs of waiting for replacement parts or driving to the service center. Airlessco keeps you productive with the Quick Repair Pump system. With a spare cartridge kit on hand, you can remove and replace the cartridge in four simple steps and get back to work.



1. SLIDE OPEN THE ACCESS DOOR

2. REMOVE PUMP SECTION

3. USE FRAME TO LOOSEN CARTRIDGE

4. INSTALL NEW CARTRIDGE AND REPLACE PUMP

MP & LP SERIES



ELECTRIC AIRLESS PAINT SPRAYERS FOR RESIDENTIAL/LIGHT COMMERCIAL USE

MP & LP Series sprayers features tough, compact, well-balanced frames, protecting the pump and making it easy to carry. The pump is the core of any airless sprayer, and these are built with Airlessco's new Pro-Duty Quick Repair Pump with externally adjustable packing that keeps you spraying. With it's fan-cooled DC motor, you get reliable performance every day, backed by our 2-Year Advantage Protection warranty with one-time piston and packing allowance plus lifetime coverage for the pump cylinder, gearbox, and electric motor.

MP455



- APPLICATIONS:** Medium to large residential projects
- SPRAY:** Water and Oil-Based Coatings, 100% Acrylics, Stains, Sealers, Varnishes and Lacquers
- USAGE:** Up to 1,500 gallons per year
- FEATURES:**
- Industrial quality high torque DC motor
 - Pro-Duty pump with chrome piston rod and lifetime pump cylinder
 - Exclusive externally adjustable packings
 - Reliable pressure control for smooth spraying
- INCLUDES:** 1/4 in x 50 ft hose, 4-finger trigger ProLight 500 gun, conversion kit to 2-finger trigger and 517 Rev-Tip



LP555



- APPLICATIONS:** Medium to large residential projects and light commercial buildings
- SPRAY:** Water and Oil-Based Coatings, 100% Acrylics, Stains, Sealers, Varnishes and Lacquers
- USAGE:** Up to 2,500 gallons per year
- FEATURES:**
- Precision spray control system provides smooth spraying across a wide range of pressures
 - LCD digital display
 - Industrial quality high torque TEFC DC motor
 - Pro-Duty pump with chrome piston rod and lifetime cylinder body
 - Lifetime pump cylinder
- INCLUDES:** 1/4 in x 50 ft hose, 4-finger trigger ProLight 500 gun, conversion kit to 2-finger trigger and 517 Rev-Tip



LP655



- APPLICATIONS:** Medium to large residential projects and small commercial buildings
- SPRAY:** Water and Oil-Based Coatings, 100% Acrylics, Stains, Sealers, Varnishes and Lacquers
- USAGE:** Up to 3,200 gallons per year
- FEATURES:** All of the features of the LP555
- INCLUDES:** 1/4 in x 50 ft hose, 4-finger trigger ProLight 500 gun, conversion kit to 2-finger trigger and 517 Rev-Tip

SPECIFICATIONS	MP455	LP555	LP655
Model Type	Stand – Hiboy	Stand – Hiboy – Lobby	Stand – Hiboy – Lobby
Part Number	17M132 – 17M133	17M134 – 17M135 – 17M136	17M137 – 17M138 – 17M139
Max Tip Size	0.021 in	0.023 in	0.025 in
Max Output gpm / lpm	0.48 / 1.8	0.54 / 2.0	0.60 / 2.3
Max Working Pressure psi / bar	3,300 / 227	3,300 / 227	3,300 / 227
Max Hose Length ft / m	300 / 90	300 / 90	300 / 90
Unit Weight lbs / kg	38 / 17 – 52 / 24	50 / 23 – 67 / 30 – 64 / 29	50 / 23 – 67 / 30 – 64 / 29
Motor	5/8 HP DC	7/8 HP TEFC DC	1.0 HP TEFC DC



PRO-DUTY QUICK REPAIR PUMP SYSTEM

Airlessco keeps you productive with the Quick Repair Pump system. Reduce downtime and change the pump on the job — no special tools needed!



1. LOOSEN LOCKING NUT

2. LIFT DOOR AND REMOVE PUMP

3. DISCONNECT HOSES

SL & GS SERIES



ELECTRIC AND GAS AIRLESS PAINT SPRAYERS FOR RESIDENTIAL/ MEDIUM COMMERCIAL & LIGHT INDUSTRIAL USE

Ultra-durable, this electric sprayer is designed for contractors who handle a high volume of work and want a machine with the power to support multiple guns or pump the heaviest coatings, like epoxies and elastomers. The Slow Stroker pump is built for the long haul, with strengthened capacity. Features that add longevity include the heavy-duty gearbox with hardened steel gears, a no-maintenance drive, and a smooth-rolling, chrome-plated, steel tube cart design with pneumatic wheels.

SL1250



APPLICATIONS: Large residential projects, commercial and industrial use
SPRAY: Water and Oil-Based Coatings, 100% Acrylics, Block Fillers, Stains, Sealers, Varnishes and Lacquers

USAGE: Up to 7,500 gallons per year

- FEATURES:**
- Precision spray control system provides smooth spraying across a wide range of pressures
 - Industrial quality, high torque brushless DC motor
 - Chrome piston rod and cylinder for long life
 - Large high pressure filter
 - Ability to spray with 2-guns

INCLUDES: 1/4 in x 50 ft hose, 4-finger trigger ProLight 500 gun, conversion kit to 2-finger trigger and 517 Rev-Tip



GS Series gas airless paint sprayers deliver versatility when it's a hassle to access electrical power, often the case with new construction or big jobs where you're moving around. They combine the Pro-Duty pump with a dependable Vanguard® gas engine that's CARB/EPA certified and includes oil alert engine protection if the oil gets low. GS sprayers are backed by our 2-Year Advantage Protection warranty with one-time piston and packing allowance, plus lifetime coverage on cylinder and gearbox.

GS950



APPLICATIONS: Large residential projects, commercial and industrial use
SPRAY: Water and Oil-Based Coatings, 100% Acrylics, Stains, Sealers, Varnishes and Lacquers

USAGE: Up to 10,000 gallons per year

- FEATURES:**
- Precision spray control system provides smooth spraying across a wide range of pressures
 - Vanguard 5.5 HP engine with a 3-year warranty and oil alert engine protection
 - Pro-Duty pump with chrome piston and lifetime pump cylinder
 - Exclusive externally adjustable packings
 - Oversized high-pressure filter

INCLUDES: 1/4 in x 50 ft hose, 4-finger trigger ProLight 500 gun, conversion kit to 2-finger trigger and 517 Rev-Tip



SPECIFICATIONS	SL1250	GS950
Model Type	Hiboy	Hiboy
Part Number	17M140	17M141
Max Tip Size	0.031 in 1-gun 0.023 in 2-guns	0.027 in
Max Output gpm / lpm	0.95 / 3.6	0.75 / 2.8
Max Working Pressure psi / bar	3,300 / 227	3,300 / 227
Max Hose Length ft / m	300 / 90	300 / 90
Unit Weight lbs / kg	87 / 39	100 / 45
Motor	2.0 HP Brushless DC Motor	5.5 HP Vanguard Engine

HSS & TS SERIES



HSS SERIES GAS HYDRAULIC PAINT SPRAYERS AND TS SERIES AIRLESS TEXTURE SPRAYERS FOR INDUSTRIAL USE

The feature-loaded HSS series raises the bar for hydraulic and paint pump performance. Airlessco has substantially enhanced the durability of these versatile sprayers to optimize your output and cost efficiency.

HSS9950



- APPLICATIONS:** Large residential projects, commercial and industrial use
- SPRAY:** Water and Oil-Based Coatings, 100% Acrylics, Multi-Color, Block Fillers, Elastomers, Dry Fall, Mastics, Epoxy, Intumescent Coatings, Roof Coatings, Drywall Mud and Joint Compound for Level 5 finishes
- USAGE:** Up to 30,000 gallons per year
- FEATURES:**
- Easily pumps heavy bodied coatings
 - Slow stroking design for long life
 - Less frequent maintenance for reduced operating costs and down time
 - Larger inlet seat for higher flow
 - Long pump is submerged in material – allowing heavy materials to be sprayed
 - Oversized hydraulic pump for long life
 - Large capacity reservoir keeps the system cool
 - Lower operating temps for reduced friction and wear
 - Belt guard pivots open for easy removal of engine
- INCLUDES:** 3/8 in x 50 ft hose, Mastic gun, and 631 Rev-Tip



Choose this airless texture sprayer for handling a high volume of contract work, pumping extremely heavy materials. The pump is ideal for spraying a skim coat layer of drywall mud for a Level 5 finish. Equipped with an extra-long piston with foot valve located at the bottom of the pump, the TS1750 gives you the necessary suction for heavy coatings. Features that add to its long life include the heavy-duty gearbox with hardened steel gears, and a smooth-rolling, chrome-plated, steel tube cart with pneumatic wheels. The hose reel model includes the LED digital display providing a precise readout of output pressure from 250 to 3,300 psi. These high performance units are powered by a totally enclosed, fan-cooled, industrial-quality brushless DC motor.

TS1750

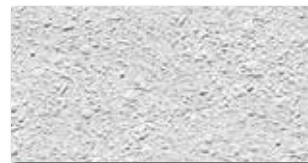


- APPLICATIONS:** Large residential projects, commercial and industrial use
- SPRAY:** Water and Oil-Based Coatings, 100% Acrylics, Block Fillers, Elastomers, Dry Fall, Mastics, Epoxy, Intumescent Coatings, Waterproofing Coatings and Drywall Mud
- USAGE:** Up to 7,500 gallons per year
- FEATURES:**
- Precision spray control system provides smooth spraying across a wide range of pressures
 - LED digital display (Hose Reel unit only)
 - Industrial quality high torque 2.8 HP DC motor
 - Chrome piston rod and cylinder for long life
 - Long pump submerged in material allowing heavy materials to be sprayed
 - Heavy-duty gearbox with hardened steel gears
 - Large inlet seat for higher flow
 - Ability to spray with 2-guns
- INCLUDES:** 3/8 in x 50 ft hose, Mastic gun, and 631 Rev-Tip



TEXTURE APPLICATION GUIDE

Examples shown below illustrate results using Mastic gun. (See page 13 for Mastic Gun Atomizer Kit)



ORANGE PEEL, FINE SPLATTER

Commonly Used Materials
All-Purpose Joint Compounds
Lightweight Joint Compounds
Wall and Ceiling Spray Textures



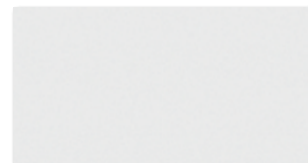
SPLATTER

Commonly Used Materials
All-Purpose Joint Compounds
Lightweight Joint Compounds
Wall and Ceiling Spray Textures



KNOCKDOWN

Commonly Used Materials
All-Purpose Joint Compounds
Lightweight Joint Compounds
Wall and Ceiling Spray Textures



SMOOTH, LEVEL 5 & SKIM COAT

Commonly Used Materials
All-Purpose Joint Compounds
Lightweight Joint Compounds
Wall and Ceiling Spray Textures
Skim Coat Materials
Wall Surfacing Materials



SPECIFICATIONS

	HSS9950	TS1750
Model Type	Cart	Hiboy – Hose Reel
Part Number	17M142	17M145 – 17M147
Max Tip Size	0.053 in 1-gun 0.037 in 2-guns	0.039 in 1-gun 0.029 in 2-guns
Max Output gpm / lpm	2.35 / 8.9	1.35 / 5.1
Max Working Pressure psi / bar	3,300 / 227	3,300 / 227
Max Hose Length ft / m	300 / 90	300 / 90
Unit Weight lbs / kg	187 / 85	118 / 54 – 133 / 60
Motor	6.5 HP Vanguard Engine	2.8 HP Brushless DC Motor

GAS AIRLESS STRIPERS FOR PROFESSIONAL CONTRACT STRIPING

The Sure Stripe 3350 is the perfect striper for professional restripe jobs, small parking lots, schools, and sports fields. With its proven components, the Sure Stripe 3350 delivers high quality lines and unmatched performance. This is a great one-gun striping unit!

Sure Stripe 3350



APPLICATIONS:

Small to medium size striping jobs

FEATURES:

- Front swivel wheel for maximum maneuverability
- Move spray gun assembly in seconds; left/right, front/back — no tools needed!
- Vanguard engine provides unmatched power
- Electronic pressure control provides excellent line quality
- Extra large manifold filter prevents clogging
- Large bucket holder has room for oversized 15-gallon paint hopper
- Pro-Duty pump with chrome piston rod and lifetime pump cylinder
- Exclusive externally adjustable packings



The Sure Stripe 4350 is the perfect striper for your mid to large size jobs. These include parking lots, intersections, bike paths, and many more applications where increased performance is needed. The Sure Stripe 4350 is the ideal unit for your everyday striping jobs that demand perfect line quality at an affordable price.

Sure Stripe 4350



APPLICATIONS:

Mid to large size striping jobs

FEATURES:

- Front swivel wheel for maximum maneuverability
- Move spray gun assembly in seconds; left/right, front/back — no tools needed!
- Vanguard engine provides unmatched power
- Electronic pressure control provides excellent line quality
- Extra large manifold filter prevents clogging
- Large bucket holder has room for oversized 15-gallon paint hopper
- Chrome piston rod and cylinder for long life



SPECIFICATIONS

	SURE STRIPE 3350	SURE STRIPE 4350
Part Number	25M231	25M233 1-gun 25M234 2-guns
Max Tip Size	0.027 in	0.036 in 1-gun 0.025 in 2-guns
Max Output gpm / lpm	.75 / 2.8	1.25 / 4.7
Max Working Pressure psi / bar	3,300 / 227	3,300 / 227
Unit Weight lbs / kg	168 / 76	183 / 83
Engine	5.5 HP Vanguard	5.5 HP Vanguard
Applications	Turf & Pavement	Turf & Pavement

ACCESSORIES



AIRLESS SPRAY GUNS

Light trigger pull – trigger lock – hand tighten "no tools required" – easy-clean one-way filter with nylon reinforced core – extra large carbide ball and seat for long wear – durable stainless steel threads for tip attachments – long life needle seal.

SPRAY GUN SPECIFICATIONS	ProLight 500 Series	Mastic Texture
2-Finger Trigger part number	17N201 (4-finger trigger installed with ability to convert to 2-finger trigger)	N/A
4-Finger Trigger part number		24E470
Max Working Pressure psi / bar	3,600 / 248	4,000 / 276
Tip & Guard Included	Rev-Tip 517	Rev-Tip 531
Repair Kit Available	288817	237260

REV-TIP HAND-TIGHT BASE/GUARD

248200 "G" Thread = 7/8 in (22 mm)
249303 "F" Thread = 11/16 in (17 mm)
Quickly change from horizontal to vertical spray pattern.
Easy no tools assembly.

"F" TO "G" ADAPTER

248248 (Converts "F" Thread to "G" Thread)

MASTIC GUN AIR ATOMIZER KIT WITHOUT AIR HOSE

244233 (Minimum air compressor rating of 15 cfm at 90 psi)



AIRLESS HOSE

Airlessco airless hose provide superior flexibility and durability. They are designed to ensure you get the best results from your airless sprayer. They have swivel couplers and spring guards on both ends and can be coupled with other airless hoses. Whip hoses can be added to provide additional flexibility and reduce operator fatigue.

HOSE SPECIFICATIONS	Part No.	psi / bar
1/4 in x 50 ft (6.4 mm x 15 m)	HSE1450	3,300 / 227
3/8 in x 50 ft (6.4 mm x 15 m)	HSE3850	3,300 / 227
1/4 in x 25 ft (6.4 mm x 8 m)	245449	3,300 / 227
3/16 in x 3 ft (4.8 mm x 0.9 m) MXF	HSE3163	3,300 / 227
1/4 in x 3 ft (6.4 mm x 0.9 m) MXF	255439	3,300 / 227
3/16 in x 5 ft (4.8 mm x 1.5 m) MXF	HSE3165	3,300 / 227

EXTENSIONS

Extended reach tools are ideal for hard-to-reach areas like soffits, stairways and vaulted ceilings. Extend your range and spray more efficiently without ladders or scaffolding. Airless tip and pole extensions can be attached directly to an airless gun making them ideal for spraying ceilings, overhangs and decks.

LENGTH	6 in / 15.2 cm	12 in / 30.5 cm	18 in / 45.7 cm	24 in / 61.0 cm	36 in / 91.4 cm
3400 Series with Rev-Tip Hand-Tight Base ("G" thread only) part number	248233	248234	248235	248236	-- --
3500 Series (Anglehead) with Rev-Tip Hand-Tight Base ("G" thread only) part number	255258	255259	255260	255261	-- --



REV-TIP SPRAY TIPS

Snap in center of tip, no leaks, splash back or mess – tip handle simplifies installing and aligning of the seal – takes only seconds to assemble – micro-ground finish for extra long life, consistent size and spray pattern – hang tip for easy cleaning and storage – metal seal, no leaks, sprays all coatings.

STANDARD TIPS / ARVXXX

MATERIAL SPRAYED	Tip Size	Spray Pattern Width							
		2 in 5 cm	4 in 10 cm	6 in 15 cm	8 in 20 cm	10 in 25 cm	12 in 30 cm	14 in 35 cm	16 in 40 cm
Stains / Varnishes	0.007 in	107	207	307					
	0.009 in	109	209	309	409				
Lacquers / Protective Lacquers	0.011 in	111	211	311	411	511	611		
	0.013 in	113	213	313	413	513	613		
Primers / Interior and Exterior Paint	0.015 in		215	315	415	515	615	715	815
	0.017 in		217	317	417	517	617	717	817
	0.019 in		219	319	419	519	619		819
	0.021 in		221	321	421	521	621	721	821
Heavy Exterior Paint / Light Premixed Plaster	0.023 in		223	323	423	523	623	723	
	0.025 in		225	325	425	525	625	725	
	0.027 in		227	327	427	527	627		
	0.029 in		229						
	0.031 in			331	431	531	631		831
Premixed Plaster / Heavy Protective Coatings / Two Components Coatings	0.035 in			335	435	535	635		835
	0.037 in								
	0.039 in				439			739	
	0.041 in							741	
	0.043 in							743	
	0.045 in							745	

FINE FINISH TIPS / 69-FFXXX

MATERIAL SPRAYED	Fan Width	Red .011	Orange .013	Yellow .015	Blue .017	Green .019
		Stains / Varnishes				
Lacquers / Protective Lacquers	4 in	211	213	215		
	6 in	311	313	315		
	8 in	411	413	415		
	10 in		513		517	
	12 in					619

REV-TIP SEAL

248228 (5-pack)

Seal easily installs without the need for any tools! The Rev-Tip seal is compatible with the full range of paints and solvents.

ACCESSORIES



FLUIDS & FILTERS

Airlessco fluids and filters protect your equipment and keep them operating at peak performance. Airlessco fluids are approved for all airless spray pumps. MagiCLEAN™ safely removes paint from sprayers, hose, tips and guns. Pump Life protects pumps from corrosion and rust during short and long term storage. Stay Clean™ spray protectant prevents paint from sticking to equipment.

PRODUCT	PART NUMBER	SIZE/QTY.	DESCRIPTION
MagiCLEAN Starter Kit	865657	3 gal (11.3 l) MagiCLEAN, Strainer Basket, Residue Tray	Safely removes paint from sprayers, hose, tips and guns
MagiCLEAN Refill	865656	3 gal (11.3 l)	Refill bottle for MagiCLEAN Starter Kit
Pump Life Conditioner	865712 865714 865715	Display of 48-1 oz. bottles 1 qt (1 l) 1 gal (3.8 l)	Prevent internal corrosion; lubricates check balls to prevent sticking
Throat Seal Oil	867670 188392	6 oz (0.20 l) 1 qt (1 l)	Prevents paint from drying on the piston and causing damage to upper packing
Hydraulic Fluid	865657	3 gal (11.3 l)	Fluid in which power is transferred in hydraulic machinery
Stay Clean	865705	14 oz (.4 l)	Prevent paint from sticking to sprayer
Manifold Filters	245571 244071 244067 244068 17P314 17P315 17P316	Each Each Each Each Each Each Each	40 mesh InstaClean™ (fits SP340 & SP380 models) 30 mesh (fits GS and TS models) 60 mesh (fits GS and TS models) 100 mesh (fits GS and TS models) 30 mesh (fits LP and SL models) 60 mesh (fits LP and SL models) 100 mesh (fits LP and SL models)
ProLight 500 Gun Filters	17P312 17P313	Each Each	50 mesh 100 mesh

MISCELLANEOUS

Airlessco provides a full range of repair kits and accessories to keep your equipment operating at peak performance and save time and labor on every job.

PRODUCT	PART NUMBER	DESCRIPTION
Gun & Hose Connectors	4410 4413 4414 162485 239663	3/8 in (npt) x 3/8 in (npt) MBE 1/4 in (npt) x 1/4 in (npt) Hex Nipple MBE 1/4 in (npt) x 3/8 in (npt) MBE 3/8 in (npt) x 3/8 in (npsm) MBE 1/4 in (npt; M) x 1/4 in (npsm; F) Swivel
Gun Swivel Assembly	865707	Swivel assembly for all "G" thread spray guns
AngleHead Swivel	248247	Includes Rev-Tip Hand-Tight Base ("G" thread only)
Hose Cover	865696 867610	1 roll (305 m) 6 rolls (6 x 305 m)
Quick Repair Pump Kit	17J720	Fits SP340 and SP380 models Quick Repair Pump
Replacement Pumps	17M991 17M989	Pro-Duty QRP Flange mount Pro-Duty Threaded mount
Paint Hopper	17H171	6 liter capacity (1.5 gal)



STRIPING ACCESSORIES

Airlessco offers high performance striping accessories to maximize job site productivity.

PRODUCT	PART NUMBER	DESCRIPTION
Striping Gun	25M223	Fits Sure Stripe 3350, 4350 models; includes UniTip guard and 2 tips
2-Gun Conversion Kit	17P505	Fits Sure Stripe 4350 model; kit includes gun, hose cables and brackets
15-Gallon Paint Hopper	17P698	Fits Sure Stripe 3350, 4350 models; includes hopper and suction tube extension
6 in Gravity Feed Glass Bead Dispenser	24Z726	Fits Sure Stripe 3350, 4350 models; includes 6 in dispenser, hopper, wind deflector, and brackets
12 in Gravity Feed Glass Bead Dispenser	24Z727	Fits Sure Stripe 3350, 4350 models; includes 12 in dispenser, hopper, wind deflector, and brackets

SURE STRIPE TIPS / 69xxxST

Line Width	Yellow 0.015	Blue 0.017	Green 0.019	Purple 0.021	Brown 0.023	Black 0.025	Black 0.027	Black 0.029	Black 0.031
2 - 4 in	215	217	219						
4 - 6 in	315	317	319	321	323	325			
6 - 8 in		417	419	421	423	425	427		431
8 - 12 in				621	623	625	627	629	



SPECIFICATIONS

Model	SP200	SP340	SP380	MP455	LP555	LP655	SL1250	TS1750	TS1750 Hose Reel	GS950	HSS9950
Part Number	24F557	17H205	17H199	17M132 Stand 17M133 Hiboy	17M134 Stand 17M136 Loboy 17M135 Hiboy	17M137 Stand 17M139 Loboy 17M138 Hiboy	17M140	17M145	17M147	17M141	17M142
Manual Number	3A3243	3A3234	3A3234	3A4180	3A4187	3A4187	3A4147	3A4147	3A4147	3A4108	3A4102
Max Tip Size	0.015 in	0.017 in	0.019 in	0.021 in	0.023 in	0.025 in	0.031 in	0.039 in	0.039 in	0.027 in	0.053 in
Max Output psi / bar	3,000 / 207	3,000 / 207	3,000 / 207	3,300 / 227	3,300 / 227	3,300 / 227	3,300 / 227	3,300 / 227	3,300 / 227	3,300 / 227	3,300 / 227
Max Working Pressure gpm / lpm	0.27 / 1.02	0.34 / 1.3	0.38 / 1.4	0.48 / 1.8	0.54 / 2.0	0.60 / 2.3	0.95 / 3.6	1.35 / 5.1	1.35 / 5.1	0.75 / 2.8	2.35 / 8.9
Max Hose Length ft / m	75 / 23	150 / 45	150 / 45	300 / 90	300 / 90	300 / 90	300 / 90	300 / 90	300 / 90	300 / 90	300 / 90
Unit Weight lbs / kg	21 / 10	35 / 16	28 / 13	38 / 17 Stand 52 / 24 Hiboy	50 / 23 Stand 64 / 29 Loboy 67 / 30 Hiboy	50 / 23 Stand 64 / 29 Loboy 67 / 30 Hiboy	87 / 39	118 / 54	133 / 60	100 / 45	187 / 85
Motor/Engine	1/2 HP Universal	3/4 HP DC	7/8 HP DC	Brushed 5/8 HP DC	Brushed 7/8 HP TEFC DC	Brushed 1.0 HP TEFC DC	Brushless 2.0 HP TEFC DC	Brushless 2.8 HP TEFC DC	Brushless 2.8 HP TEFC DC	Vanguard 5.5 HP	Vanguard 6.5 HP
Warranty	1-Year Standard	1-Year Standard	1-Year Standard	2-Year Advantage Protection	2-Year Advantage Protection	2-Year Advantage Protection	2-Year Advantage Protection	2-Year Advantage Protection	2-Year Advantage Protection	2-Year Advantage Protection	2-Year Advantage Protection

Model	Sure Stripe 3350	Sure Stripe 4350
Part Number	25M231	25M233 1-gun 25M234 2-guns
Manual Number	3A4619	3A4628
Max Tip Size	0.027 in	0.036 in 1-gun 0.025 in 2-guns
Max Output gpm / lpm	.75 / 2.8	1.25 / 4.7
Max Working Pressure psi / bar	3,300 / 207	3,300 / 207
Unit Weight lbs / kg	168 / 76	183 / 83
Engine	5.5 HP Vanguard	5.5 HP Vanguard
Warranty	2-Year Advantage Protection	2-Year Advantage Protection



AIRLESSCO WARRANTIES:

1-YEAR STANDARD WARRANTY*

For 1 year from purchase date, we will repair any defective items to the original purchaser/user of an Airlessco airless sprayer.

2-YEAR ADVANTAGE PROTECTION WARRANTY*

For 2 years from purchase date, we will repair any defective items to the original purchaser/user of an Airlessco airless sprayer excluding rental usage. Advantage Protection includes; lifetime repair of the electric motor and drive train, one replacement repack kit within 2 years of purchase, units with Pro-Duty Pump eligible for one replacement rod within 2 years of purchase and lifetime replacement of pump cylinder.*

*Registration required for replacement parts. See operation manual for complete warranty information.





airlessco.com

AIRLESSCO CUSTOMER SERVICE

20500 David Koch Avenue
Rogers, Minnesota 55374
Phone: 800-223-8213 / Fax: 800-228-5104

AUTHORIZED AIRLESSCO SERVICE AGENCIES

Call 800-223-8213 or see our web site for the nearest authorized Airlessco Service Center.

WARRANTY

Airlessco warrants its products to be free of defects in material and workmanship. See operation manual for complete warranty information.

